



## Evans High School, A Community Partnership School

Evans High School, A Community Partnership School is the hub of our community, a place focused on student success – in school and beyond.

### Leading Students to Success

At Evans High School, programs and services available to students build on daily classroom learning and include the following:

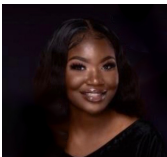
- Tutoring
- Enrichment activities
- Summer programs
- Food programs
- Volunteerism services
- Mentoring
- Wellness (medical, dental, vision, counseling)

### Serving Families

At Evans High School, we offer something no other school has in the community: A full-time Parent Resource Center which allows you to play an active role in your child's education. Here, you will find a comfortable and welcoming environment featuring classes and events that offer opportunities to succeed. Parent services include:

- Education (GED, ESOL)
- Support groups
- Workshops
- Employment and job readiness
- Housing Resources
- Computer access and resources
- Applications for government assistance

## Partnership in Action



Angena Mathurin,  
Class of 2020

"My connection with the Student Leadership Council and the Hub at Evans has reminded me that I have people behind me, who support me – we all have a similar goals for what we imagine for our community. It gave me confidence knowing that it is not just me that wants to improve the community, and I will forever have this support."



Sephora Zephyr,  
Class of 2020

"I am especially grateful for CHS because I am adopted and I felt really moved knowing there is an entire organization devoted to helping children who come from a similar background like me. It makes me feel supported and loved knowing there are other people who are able to get help because CHS is there as a backbone of support."

Since becoming a Community Partnership School, the graduation rate at Evans has increased from 64% to 99%!

For more information, contact Alexandria Turnley, Community Partnership School Director at 407-522-3400 or [Alexandria.Turnley@chsfl.org](mailto:Alexandria.Turnley@chsfl.org)

[WWW.CHSFL.ORG/SCHOOLS/EVANS](http://WWW.CHSFL.ORG/SCHOOLS/EVANS)

Evans High School, A Community Partnership School is a partnership among Children's Home Society of Florida, Orange County Public Schools, Orange Blossom Family Health and the University of Central Florida.

