



COMMUNITY PARTNERSHIP SCHOOLS 2019-2020 AT A GLANCE

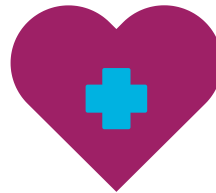
As a leader and core partner in 20 schools statewide, CHS provides access to critical services that can keep more kids safe at home, ready to learn – and out of foster care. By addressing barriers that interfere with education - such as hunger, poverty, inadequate access to health care, mental health care and more - Community Partnership Schools improve physical and emotional health, increase parental involvement and empower students to shine, paving paths filled with opportunities.

HEALTH & WELLNESS



4,089

STUDENTS RECEIVED
MEDICAL, VISION &
DENTAL SERVICES



1,873

STUDENTS RECEIVED
BEHAVIORAL HEALTH
SERVICES

EDUCATION



48,754

HOURS OF ACADEMIC TUTORING



87,919

HOURS OF STUDENT PARTICIPATION
IN ENRICHMENT ACTIVITIES

FAMILY ENGAGEMENT



807

FAMILY EVENTS
AND ACTIVITIES



18,252

FAMILY MEMBERS
ATTENDED

COMMUNITY ENGAGEMENT



10,616

INDIVIDUAL VOLUNTEERS
SERVED AT SCHOOLS



32,014

HOURS OF VOLUNTEERISM
CONTRIBUTED BY STUDENTS,
PARENTS & THE COMMUNITY

**To help protect the health and safety of students, families, teachers and the community, all activities represented on this document were paused from March 2020 through the end of the school year due to the COVID-19 pandemic. Reporting period: June 2019 - July 2020.*

DATA COMPILED FROM THE FOLLOWING COMMUNITY PARTNERSHIP SCHOOLS:

- C.A. Weis Elementary (Pensacola)
- Edward H. White Academy of Leadership (Jacksonville)
- Endeavour Elementary (Cocoa)
- Evans High School (Orlando)
- Howard Bishop Middle (Gainesville)
- Keystone Heights Jr/Sr High (Keystone Heights)
- Mort Elementary School (Tampa)
- OCPS Academic Center for Excellence (Orlando)
- Sabal Palm Elementary (Tallahassee)
- South Woods Elementary (Elkwood)
- The Webster School (St. Augustine)
- Wilkinson Jr High School (Middleburg)

TO LEARN MORE VISIT [CHSFL.ORG/COMMUNITYPARTNERSHIPSCHOOLS](https://chsfl.org/communitypartnershipschools)